A solid green horizontal bar with a slight downward-pointing right end is positioned above the main title.

# AppSense Management Pack for Microsoft® Systems Center Operations Manager

## Quick Install Guide

### In this Document:

- [Available Management Packs](#)
- [Install the Management Packs](#)
- [Enable AppSense Events](#)

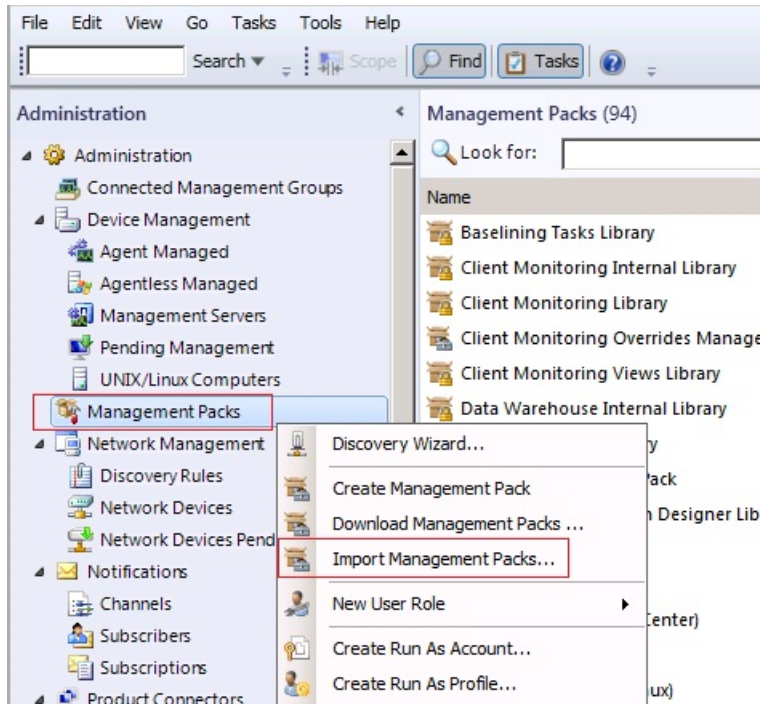
## Available Management Packs

AppSense have created management packs for System Center Operations Manager (SCOM) 2007 R2 and System Center Operations Manager (SCOM) 2012 for the following AppSense products:

- AppSense Application Manager Agent 8.3.129.0 or above
- AppSense Environment Manager Agent 8.2.125.0 or above
- AppSense Performance Manager Agent 8.1.110.0 or above
- AppSense Client Communications Agent 8.2.606.0 or above
- AppSense Personalization Server 8.2.125.0 or above
- AppSense Management Server 8.3.43.0 or above
- AppSense Local Statistics Server 8.1.110 or above

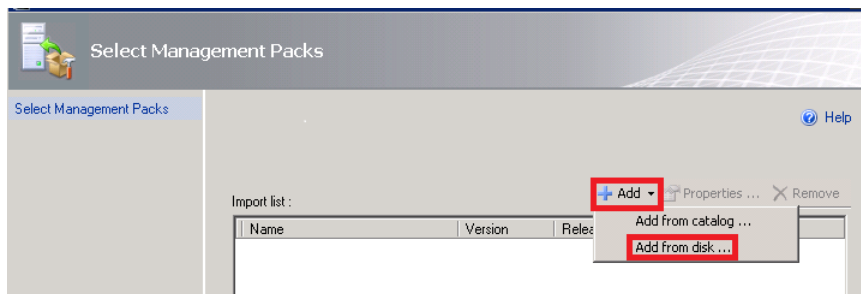
## Install the Management Packs

1. Access the SCOM Operations Console and connect to your Management Server.
2. Click **Administration** in the left pane of the console.
3. Right-click **Management Packs** and select **Import Management Packs**.



The Import Management Packs wizard opens on the Select Management Packs page.

4. Click **Add > Add from disk**.

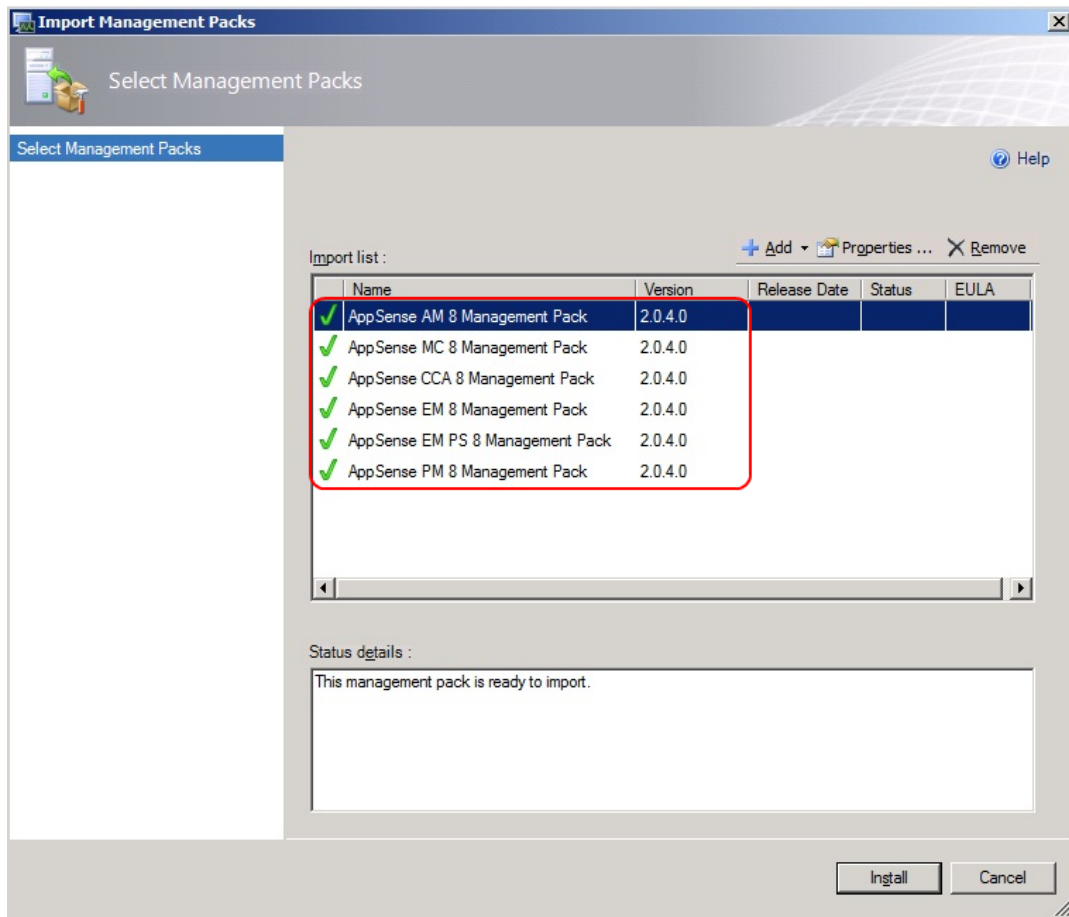


A dialog prompts you to search the online catalog for management pack dependencies.

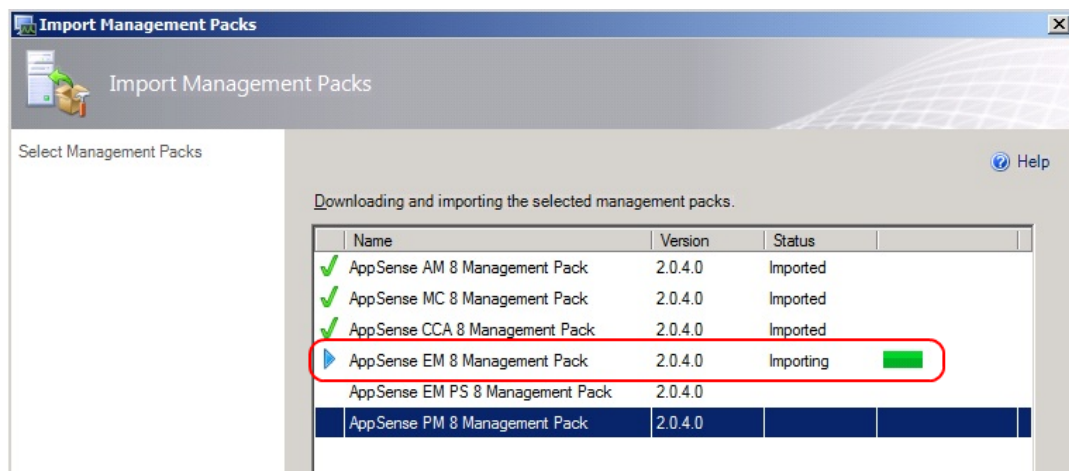
5. The AppSense management packs have no dependencies, click **No**.
6. From the Select Management Packs to Import dialog, browse to the location of the AppSense management packs you want to install.
7. Select the management packs that are relevant to your environment as required.
8. Click **Open**.

The import list shows the selected management packs.

9. Click **Install**.



The wizard starts the installation, showing the status of each import.



10. When the import completes, click **Close**.

## Enable AppSense Events

With the AppSense management packs installed, the Microsoft SCOM monitors the Windows event log for AppSense events.

To view AppSense events in the Microsoft SCOM console, enable auditing in each of the AppSense product consoles or in the AppSense Management Center console.